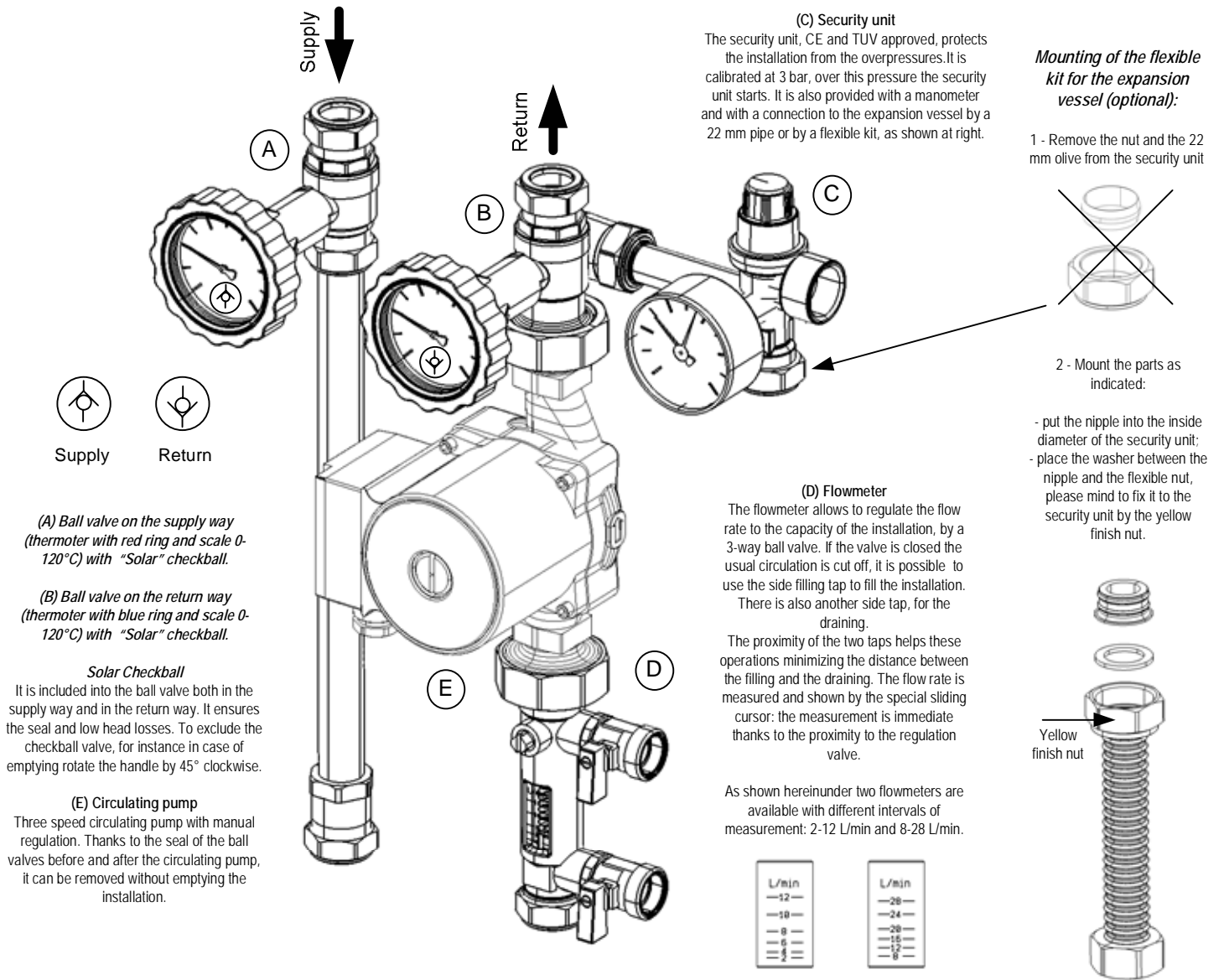
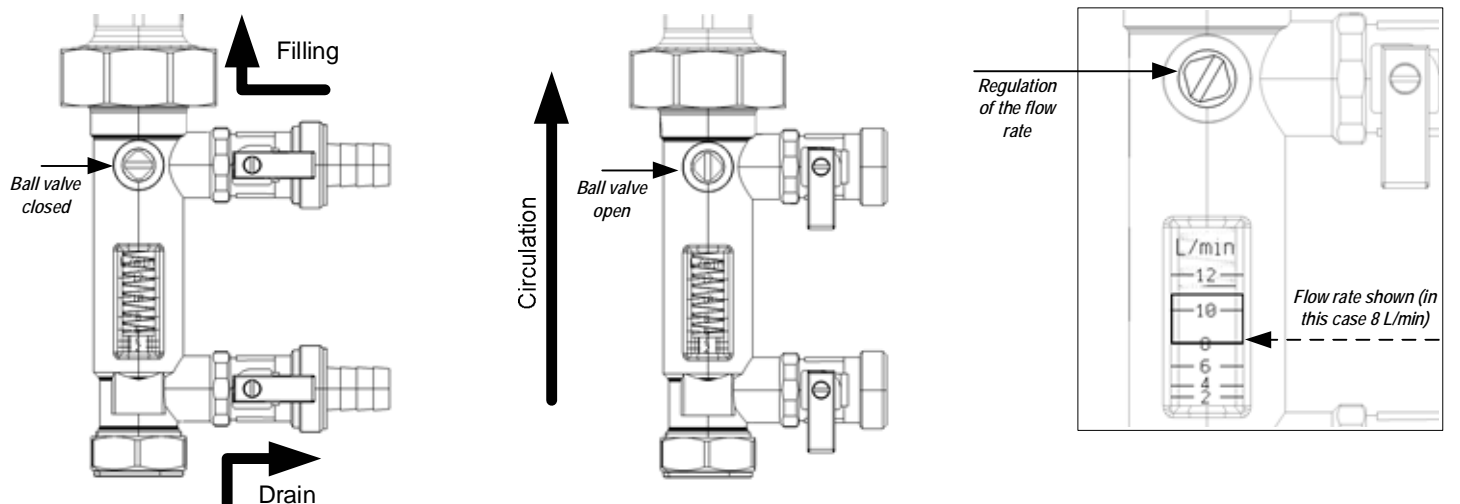


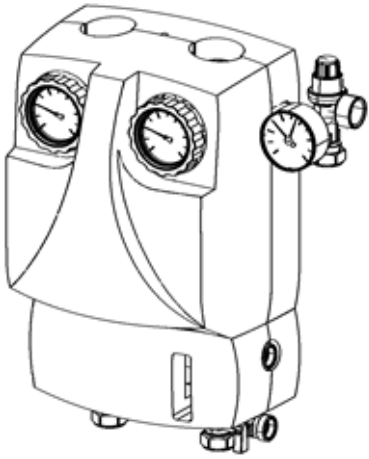
# Pumping station 2-way "Solar2"



## Directions for the use of the flowmeter to fill the installation:



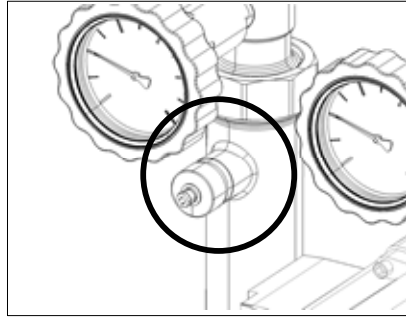
# Pumping station 2-way "Solar 3"



## Epp insulation box

Measurements 250x380x190.

Two different covers one for the circulating pump/the valves and another for the flowmeter. Side opening for the security unit. Inside holder for the 22 mm pipe. A special window allows to read and to regulate the flow without removing the cover.



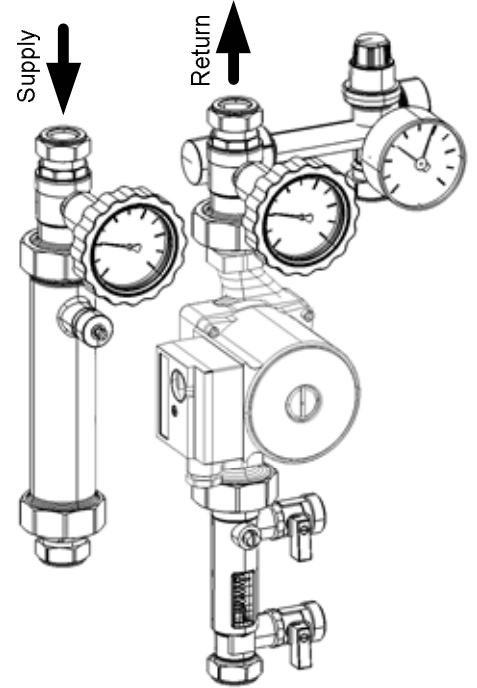
## Model with the vent air

The vent air is a device that divides continually the air that can be in circulation together with the fluid.

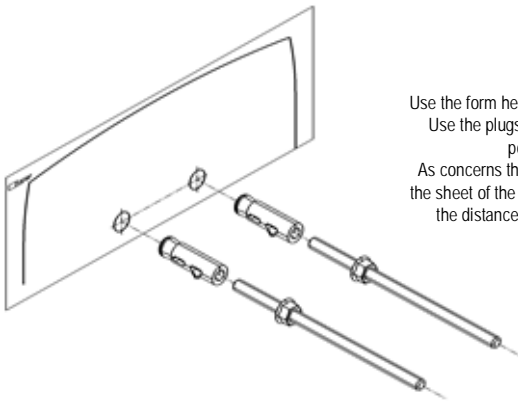
The air goes to the upper part of the vent air and it can be eliminated through the special drain while the installation is working. Unscrew of 360° the knurled metal ring lock. This operation has to be done at intervals.

### **TAKE CARE!**

**To avoid any leakage of the fluid, taking into consideration the very high working temperature, we recommend to fasten a pipe to the end of the drain.**



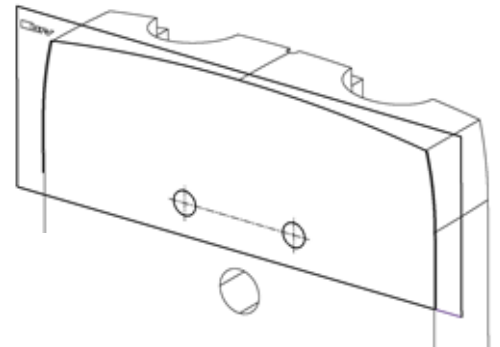
## Directions for the wall mounting:



### (1) Drilling and plugs

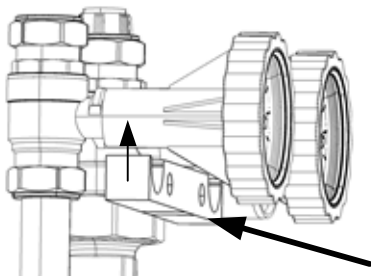
Use the form here enclosed to drill the wall on which the holder will be fastened. Use the plugs  $\varnothing 14$  included in the packing. Screw the threaded rod in the right position (the plug is extending) and screw the lock nut.

As concerns the right positions and the depth please consider the plan printed on the sheet of the form. The protrusion from the wall of the threaded rods depends on the distance between the wall and the insulation box you want. For a proper mounting we recommend 135 mm.



### (2) Back lock nut

Screw the lock nuts on the two threaded rods, screw them up to 30 mm from the point.



### (3) Bracket

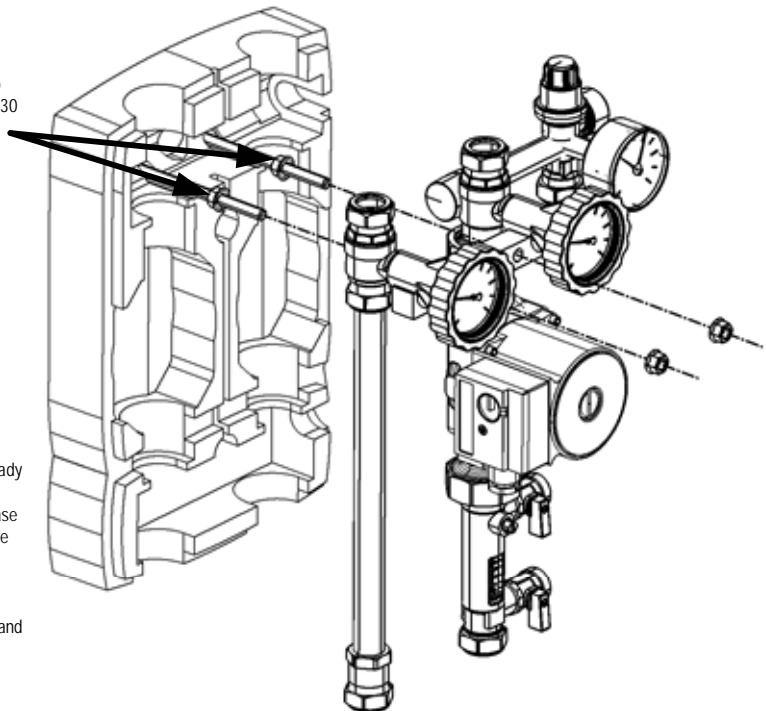
The pumping station is held by the bracket. Put the cylindrical part of the handles on the bracket into the special seats

### (4) Placing of the pumping station

Put the bracket with the pumping station already leaned on the threaded rods.

As regards the right position on the wall please consider the plan printed on the sheet of the form. Adjust eventually the two lock nuts previously placed (2).

Fix the unit screwing the two remaining nuts and fastening the two lock nuts.



### Pieces included into the mounting kit

- n.1 sheet with the form and with the directions for the wall mounting.
- n.2 threaded rods M8x170
- n.2 wall plugs  $\varnothing 14$
- n.1 bracket.
- n.6 nuts/lock nuts M8